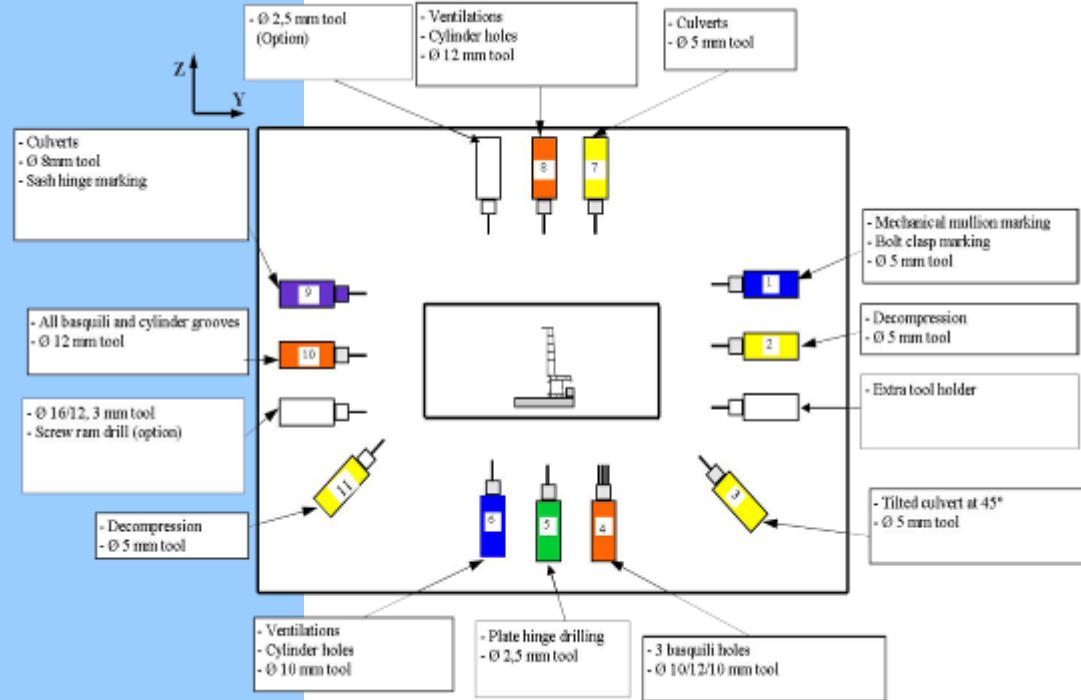


## TECHNICAL CHARACTERISTICS

• CNC Pusher speed .....	From 0 to 180 m/min
• Storing charger capacity.....	From 400 mm to 6500 mm standard mode (10 bars)
• Minimum-Maximum length of the parts after slicing.....	400-6000 mm
• Gripping clip.....	Digitalized vertical and transversal axis
• Dust extraction.....	3 extractions Ø 120 mm
• Debris evacuation .....	Via conveyor belt and lift
• Operating system.....	Microsoft Windows
• Air supply pressure .....	6 Bars
• Installed power.....	29 kW
• Supply voltage .....	380 volts three phase
• Fork lift handling weight.....	6 tons

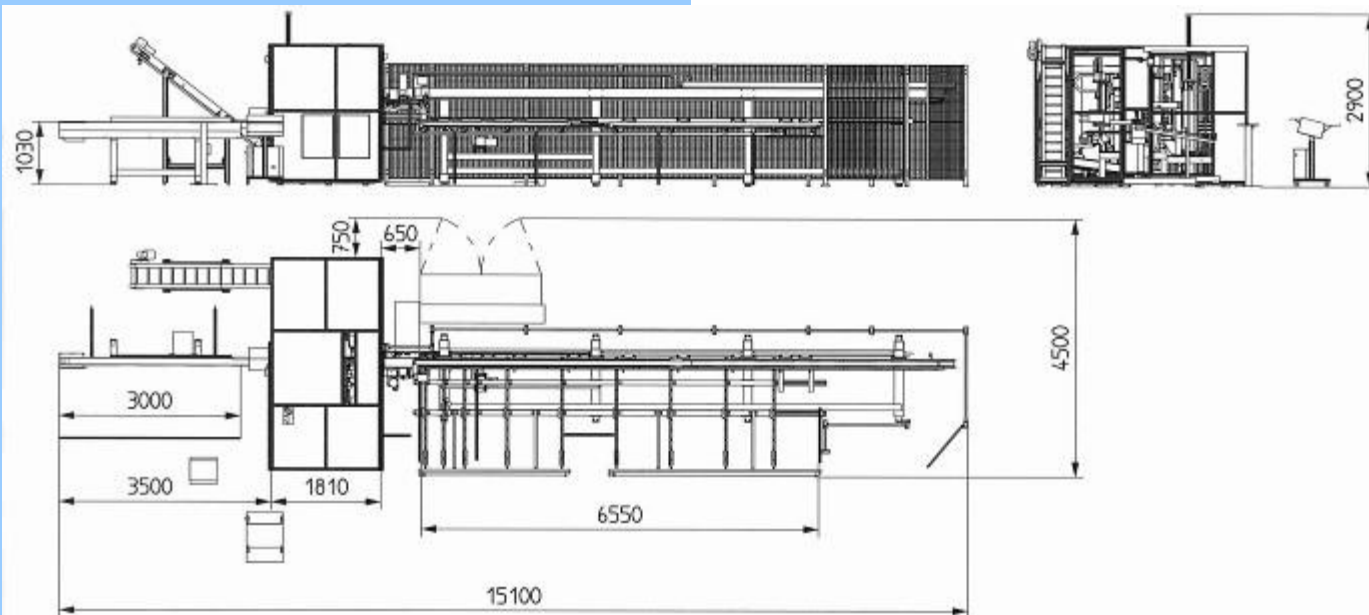
## MAIN TOOL HOLDERS

All the spindles have a pneumatic approach. Each one of them is carried by 2 digital axis: horizontal transversal travel 400 mm (axis Y), vertical travel 300 mm (axis Z). The grooves are made by the gripping clip of the pusher (axis X). The 3 axis are interpolar, 2 by 2.



## COMPLEMENTARY EQUIPMENT

- Jet ink printer
- Label printer
- Sawing unit for « V » cutting and pointed sawing
- Notching on edge
- Troubleshooting service and remote maintenance (modem and „PC Anywhere“ software set up)



Data and features indicated in this document may be modified and cannot engage our responsibility

# CC5 compact center miter cutting and machining for PVC joinery profiles



**Today, Large series and time production must be reduced.**

**The personalization of the products of joineries became a requirement.**

**To meet all machining requirements, PARVEAU has designed a compact machining center with a capacity of up to 90 windows per day.**



**PARVEAU MAB**  
 33, Avenue de la Gare  
 19130 VIGNOLS  
**FRANCE**  
 Tél. +33 (0)5 55 25 80 01  
 Fax +33 (0)5 55 25 06 29  
 Internet : <http://www.parveau.fr>  
 E.Mail : [infos@parveau.fr](mailto:infos@parveau.fr)



## CONCEPT

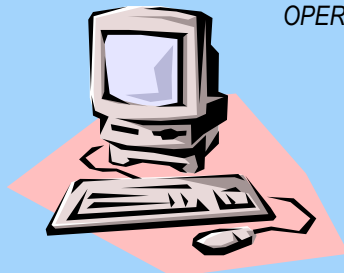
- This modular machine allows any milling and drilling on the 4 faces of PVC profiles, as well as the miter and straight cutting, « V » cutting (option), and pointed cuts (option).
- A label printer helps the follow-up and the traceability of the parts (jet ink printer in option).
- The machine is equipped with 11 tool holders and can received up to 14. The potential production can be up to 90 windows per day with or without conveyor belt storage magazine.

## PROGRAMMING

- Thanks to the CAD/CAM software, the customer orders are recorded only once. Then the data is sent automatically to the machining center, and to other machines (welding machine, corner cleaning machine, hinge inserting machine). It avoids any other data entry.
- The system operates with Microsoft Windows. It ensures a good operating flexibility and a compatibility with your computing system.
- The profile parts are identified by a barcode. The program is automatic.

### COMPUTER

Containing a CAD/CAM software. Our machine is compatible with these softwares : CHACAL, EASYWIN, KLAES, LOOK DYNAMIC, OPERA, PROGES, WINDOWMAKER WINPRO...



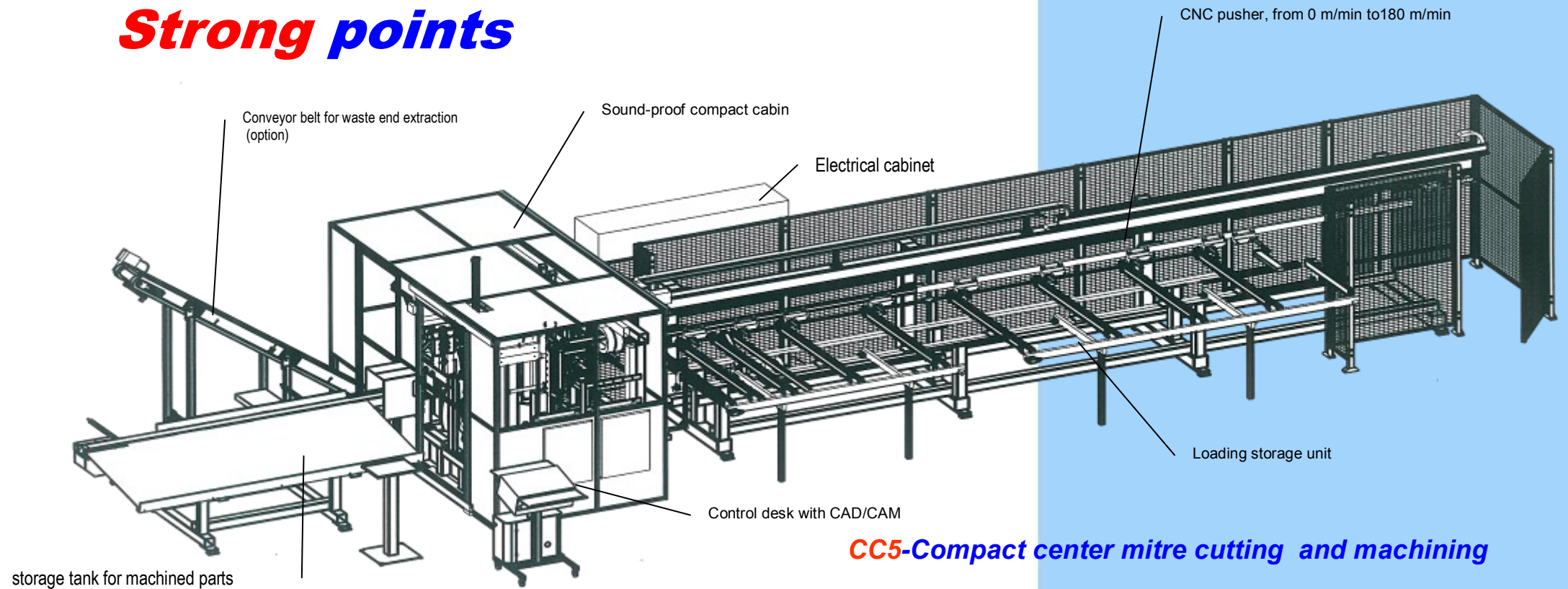
### DATA TRANSFERT

- Link « ONLINE »
- USB key



**OPERATING DESK**  
Computer with Windows

## Strong points



**CC5-Compact center mitre cutting and machining**

## USING PRICIPLE

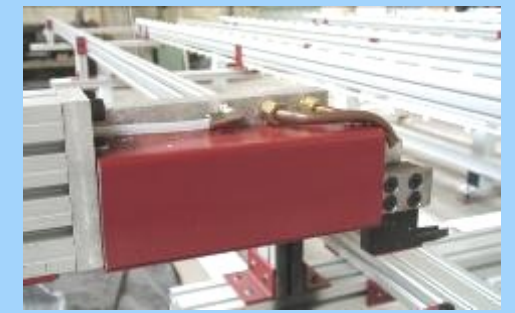
- Thanks to a CAD/ CAM software and via the network, the operator downloads the necessary information to the machine programming (profile type, size, type of machining, quantity to produce...)
- He puts on the loading storage unit the corresponding PVC profiles.
- The machine measure each profile in order to check if the length is the right one and compatible with the program.
- The compact center machines : mitre cutting, cross cut slicing, drilling, routing.
- Machined parts are stored in a storage tank.
- The debris are taken away to a storage bin.



Loading storage unit



Jet of ink printer or label printer on each profile with bar code



Gripping clip



Sawing unit for 45° to 90° cut, « V » cutting and pointed sawing



Machining unit



Machining unit



Jet of ink printer



Storage tank with label printer on exit



Conveyor belt and debris lift

