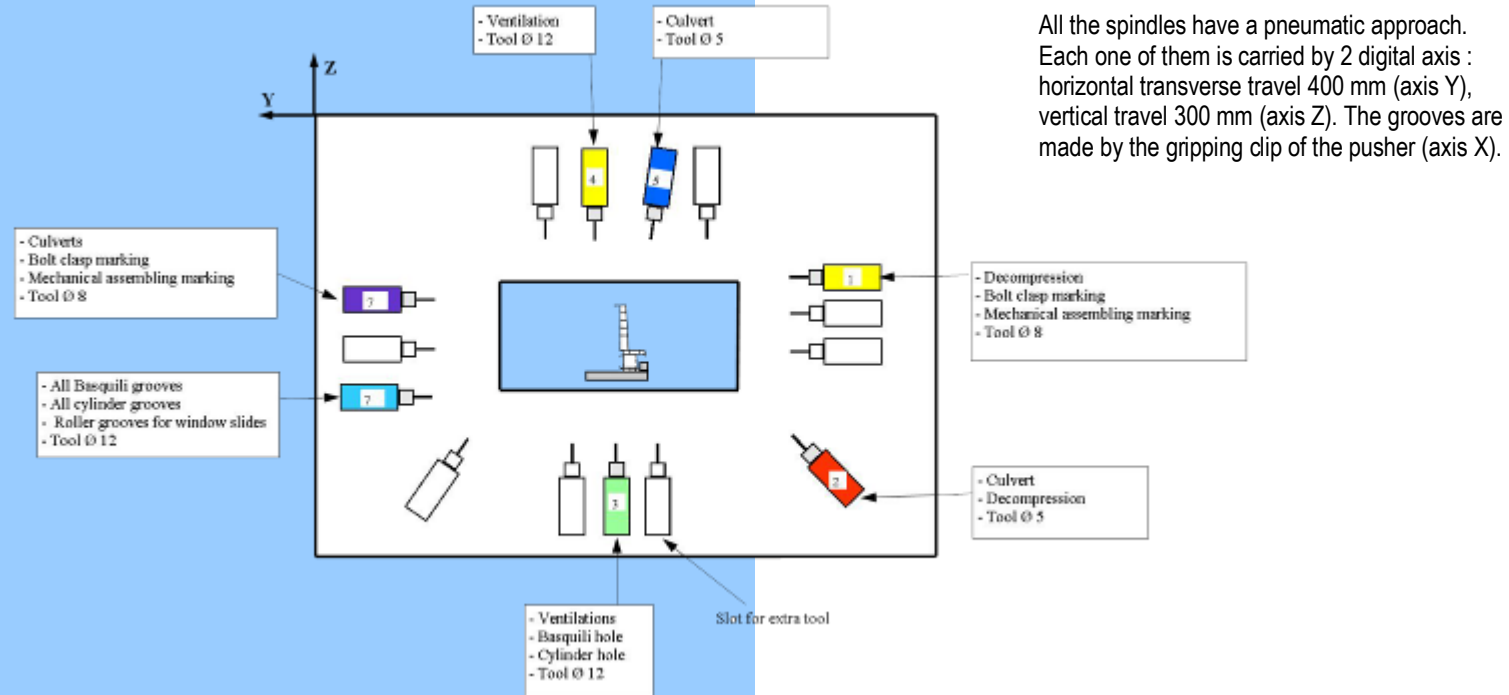


## TECHNICAL CHARACTERISTICS

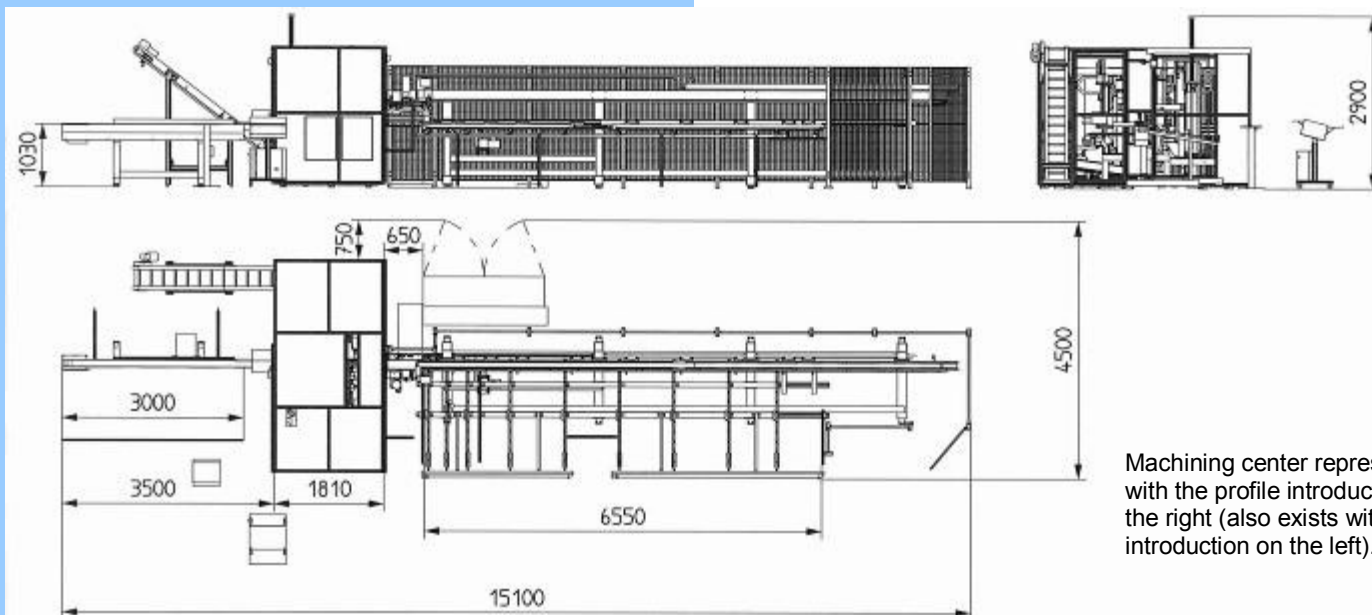
• CNC pusher speed .....	From 0 to 120 m/min
• Loading storage unit capacity .....	From 400 mm to 6500 mm standard mode (10 bars)
• Minimum-maximum length of the parts after slicing .....	From 300 up to 6000 mm
• Dust extraction .....	3 x Ø 120 mm suction holes
• Operating system .....	Microsoft Windows
• Air pressure supply .....	6 Bars
• Installed power .....	18 kW
• Supply voltage .....	380 volts three phase + earth + neutral
• Fork lift handling weight .....	6 tons

## MAIN TOOL HOLDERS



## COMPLEMENTARY EQUIPMENT

- Jet ink printer
- Label printer
- Debris extraction conveyor belt
- Vertical and transversal digitalization of the CNC pusher grips
- Storage magazine with conveyor belt
- Troubleshooting service and remote maintenance (modem and "PC Anywhere" software set up)



Data and features indicated in this document may be modified and cannot engage our responsibility

# CC3 compact center miter cutting and machining for PVC joinery profiles



Today, large series and time production must be reduced.

The customization of joinery products has become a requirement.

To meet all machining requirements, PARVEAU has designed a compact center with a capacity from 40 to 60 windows per day.



**PARVEAU**  
Profitable machining\*

**PARVEAU MAB**  
33, Avenue de la Gare  
19130 VIGNOLS  
**FRANCE**  
Tél. +33 (0)5 55 25 80 01  
Fax +33 (0)5 55 25 06 29  
Internet : <http://www.parveau.fr>  
E.Mail : [infos@parveau.fr](mailto:infos@parveau.fr)

## CONCEPT

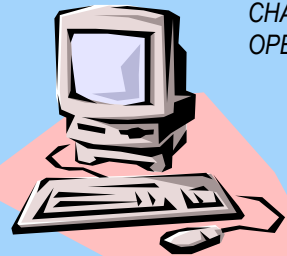
- This modular machine allows any millings and drillings on the 4 faces of PVC profiles, as well as miter and straight cutting.
- A label printer helps the follow-up and the traceability of the parts (option).
- The standard machine is equipped with 7 tools holders and can receive up to 15 in option. The potential production goes up to 50 windows per day (7 hours).

## PROGRAMMING

- Thanks to the CAD/CAM software, the customer orders are recorded only once. Then the data is sent automatically to the machining center, and to other machines (welder, corner cleaning machine, hinge inserting machine). It avoids any other data entry.
- The system operates with Microsoft Windows. It ensures a good operating flexibility and a compatibility with your computing system.

### COMPUTER

Containing a CAD/CAM software. Our machine is compatible with these softwares :  
 CHACAL, EASYWIN, KLAES, LOOK DYNAMIC, OPERA, PROGES, WINDOWMAKER WINPRO...



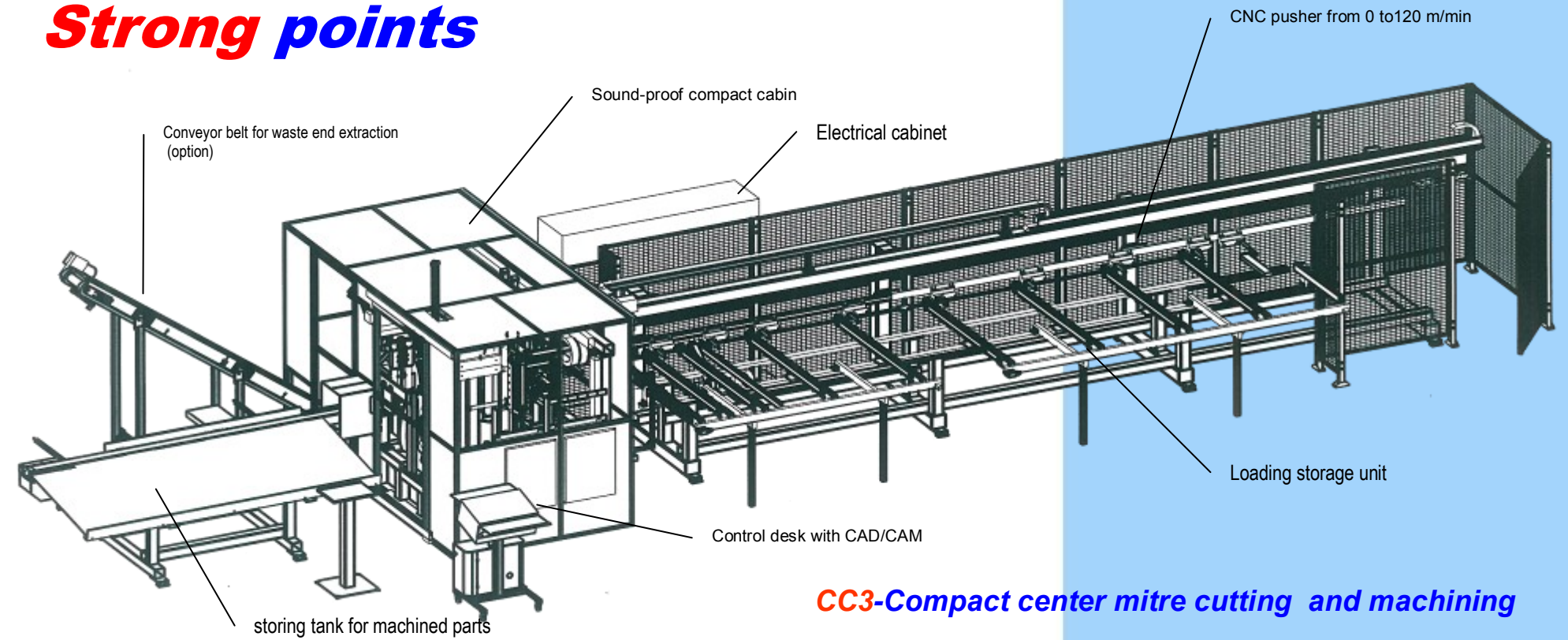
### DATA TRANSFERT

- Link « ON LINE »
- USB key



**OPERATING DESK**  
Computer with Windows

## Strong points



**CC3-Compact center mitre cutting and machining**

## USING PRINCIPLE

- Thanks to a CAD/CAM software and via the network, the operator downloads the necessary information to the machine programming (profile type, size, type of machining, quantity to produce...)
- He puts on the loading storage unit the corresponding PVC profiles.
- The machine measures each profile in order to check if the length is the right one and compatible with the program.
- The compact center machines : mitre cutting, cross cut slicing, drilling, routing.
- Machined parts are stored on the recovery tank.
- The debris are taken away to a storage bin.



Loading storage unit



Jet ink printer or label printer on each profile with bar code



Gripping clip



Sawing unit for 45° to 90° cut



Machining unit



Machining unit



Control cabinet



Storage tank with label printer on exit



Conveyor belt and debris lift (option)

